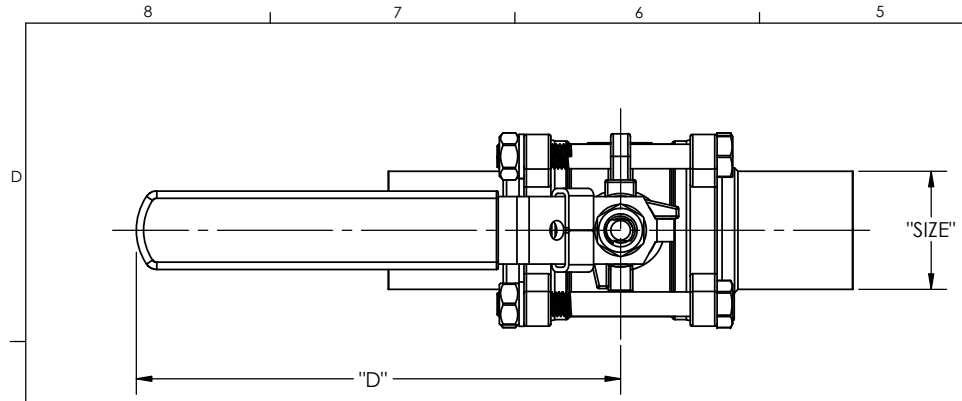
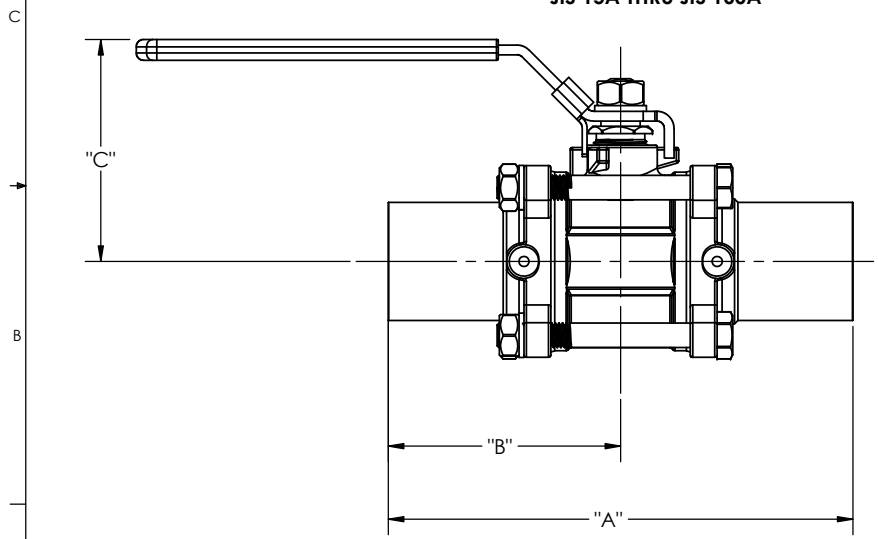


REVISION RECORD			
REV.	DATE	DESCRIPTION	DCN
C	06-11-2014	CHANGES PER DCN 2103	2103
D	05-22-2018	CHANGES PER DCN 3976	3976
E	02-25-2019	CHANGES PER DCN 4219	4219
F	03-29-2019	CHANGES PER DCN 4265	4265

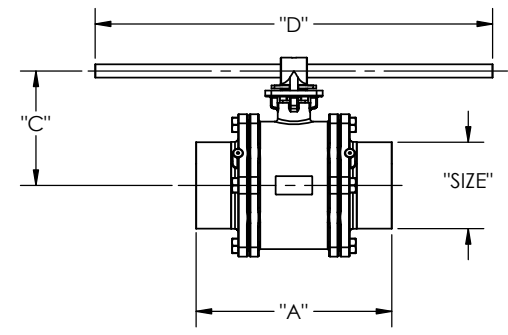
DIMENSIONS IN MILLIMETERS				
SIZE	"A"	"B"	"C"	"D"
NPS 1/2 / JIS 15A	135.4	67.7	59	105
NPS 3/4 / JIS 20A	135.0	67.5	65	133
NPS 1 / JIS 25A	152.0	76.0	74	159
NPS 1-1/4 / JIS 32A	177.2	88.6	78	159
NPS 1-1/2 / JIS 40A	190.0	95.0	91	198
NPS 2 / JIS 50A	204.0	102.0	99	198
NPS 2-1/2 / JIS 65A	253.8	126.9	138	260
NPS 3 / JIS 80A	280.0	140.0	149	260
NPS 4 / JIS 100A	306.0	153.0	186	288
NPS 5 / JIS 125A	320.0	160.0	198	650
NPS 6 / JIS 150A	376.4	188.2	235	305



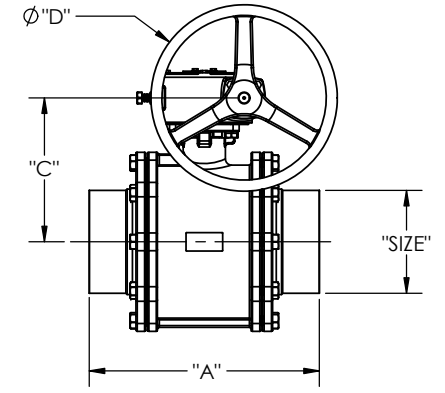
**SIZES: NPS 1/2 THRU NPS 4
JIS 15A THRU JIS 100A**



SIZES: NPS 5 / JIS 125A




SIZES: NPS 6 / JIS 150A



1. DIMENSIONS ARE APPROXIMATE AND MAY VARY FROM VALVE TO VALVE. REFERENCE VALEX SPECIFICATIONS SP-9236 FOR OVERALL LENGTH TOLERANCES.
2. DIMENSIONS ARE SUBJECT TO CHANGE AS PRODUCT IMPROVEMENTS MAY ALTER VALVE DESIGN.

NOTES: UNLESS OTHERWISE SPECIFIED

CAD GENERATED DRAWING. DO NOT MANUALLY UPDATE		 6080 LELAND ST. VENTURA, CA, 93003 (805) 638-0944 www.valex.com	
APPROVALS	DATE	BALL VALVE, PCW STRAIGHT, PIPE ENDS	
DRAWN C. MAO	01-15-2013		
CHECKED T. NEVINS	02-14-2013		
ENG. C. MAO	02-14-2013		
Q.A. R. MULDRON	02-14-2013	SIZE B	DWG. NO. PDC-PCW-STR-LL
MFG. T. KELLENBERGER	02-14-2013	SCALE: 1:2	REV. F SHEET 1 OF 1