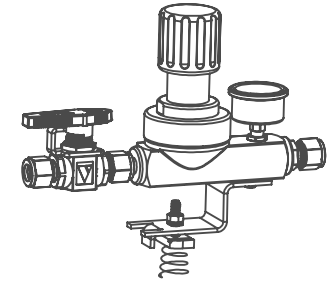
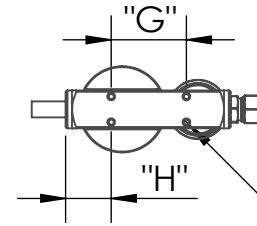
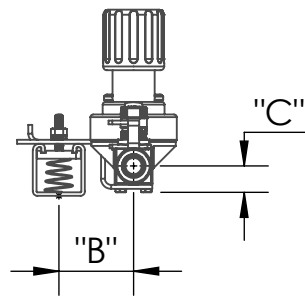
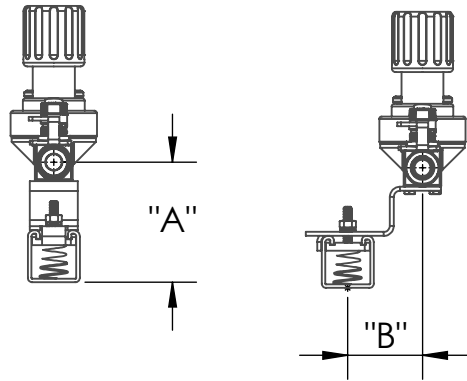


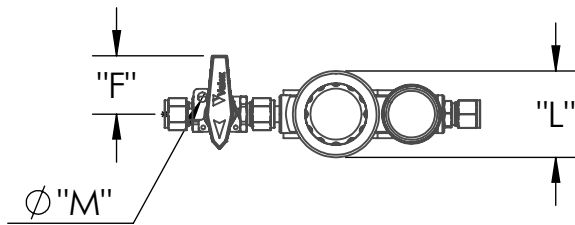
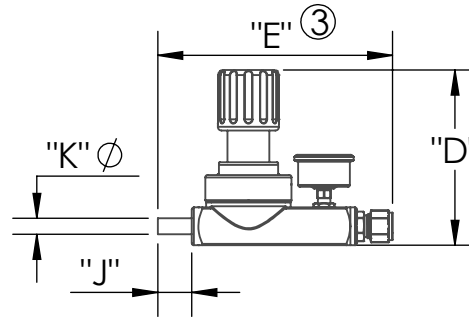
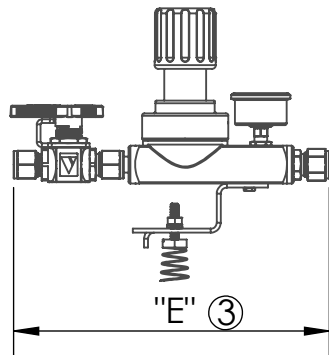
THE INFORMATION CONTAINED IN THIS DRAWING IS THE SOLE PROPERTY OF VALEX CORPORATION. ANY REPRODUCTION IN PART OR WHOLE WITHOUT THE WRITTEN PERMISSION OF VALEX CORPORATION IS PROHIBITED.

## G2 & G3 CONFIGURATIONS

REVISIONS RECORD			
DATE	REV.	DESCRIPTION	DCN
07/31/20	F	CHANGES PER DCN 4846	4846
09/23/20	G	CHANGES PER DCN 4886	4886
10/14/20	H	CHANGES PER DCN 4904	4904
06/10/21	I	CHANGES PER DCN 5162	5162
09/14/22	J	CHANGES PER DCN 5747	5747



$\phi$  10-32 UNF -2B



### NOTES:

1. DIMENSIONS ARE APPROXIMATE AND MAY VARY FROM VALVE TO VALVE  
REFERENCE VALEX SPECIFICATION SP-9240
2. DIMENSIONS ARE SUBJECT TO CHANGE AS PRODUCTS IMPROVEMENTS MAY ALTER VALVE DESIGN
- ③ 3. OVERALL LENGTH DIMENSION IS CALCULATED ASSUMING COMPRESSION NUT IS FINGER TIGHT
4. HEIGHT AND OFFSET DIMENSIONS ARE CALCULATED USING 1-5/8" X 1-5/8" STRUT CHANNEL MATERIAL
5. UNITS ARE IN INCHES

**Valex**  
6080 LELAND ST.  
VENTURA, CA. 93003  
(805) 658-0944  
[www.valex.com](http://www.valex.com)

## CUT SHEET CFOS GAS STICK

SIZE A	DWG. NO. PDC-GAS STICK	REV. J
SCALE: 1:6		SHEET 1 OF 2

## G2 & G3 CONFIGURATIONS

PART NUMBER	DESCRIPTION	"A"	"B"	"C"	"D"	"E"	"F"	"G"	"H"	"J"	"K"	"L"	"M"
G3A-0404T-1-00	1/4" GAS STICK W/O BALL VALVE, 0.15 CV	-	-	-	4.2	5.9	-	1.77	1.20	0.75	0.25	1.89	-
G3A-0404T-1-10	1/4" GAS STICK W/O BALL VALVE, 0.15 CV, MOUNTING BRACKET	3.59	2.34	0.67	4.2	5.9	-	1.77	1.20	0.75	0.25	1.89	-
G3B-0808T-1-00	1/2" GAS STICK W/O BALL VALVE, 1.8 CV	-	-	-	5.5	7.3	-	2.35	1.43	1.06	0.50	2.70	-
G3B-0808T-1-10	1/2" GAS STICK W/O BALL VALVE, 1.8 CV, MOUNTING BRACKET	3.79	2.34	0.87	5.5	7.3	-	2.35	1.43	1.06	0.50	2.70	-
G2A-0404C-1-00	1/4" GAS STICK ASSEMBLY, 0.15 CV	-	-	-	4.2	7.9	1.22	1.77	1.20	-	-	1.89	-
G2A-0404C-1-01	1/4" GAS STICK ASSEMBLY, 0.15 CV, FILTER LF	-	-	-	4.2	11.0	1.22	1.77	1.20	-	-	1.89	-
G2A-0404C-1-10	1/4" GAS STICK ASSEMBLY, 0.15 CV, MOUNTING BRACKET	3.59	2.34	0.67	4.2	7.9	1.22	1.77	1.20	-	-	1.89	-
G2A-0404C-1-20	1/4" GAS STICK ASSEMBLY, 0.15 CV, LOTO	-	-	-	4.2	7.9	1.22	1.77	1.20	-	-	1.89	0.3
G2A-0404C-1-30	1/4" GAS STICK ASSEMBLY, 0.15 CV, MOUNTING BRACKET, LOTO	3.59	2.34	0.67	4.2	7.9	1.22	1.77	1.20	-	-	1.89	0.3
G2A-0606C-1-00	3/8" GAS STICK ASSEMBLY, 0.15 CV	-	-	-	4.2	8.2	1.37	1.77	1.20	-	-	1.89	-
G2B-0606C-1-00	3/8" GAS STICK ASSEMBLY, 1.8 CV	-	-	-	5.5	9.5	1.37	2.35	1.43	-	-	2.70	-
G2B-0606C-1-01	3/8" GAS STICK ASSEMBLY, 1.8 CV, FILTER LF	-	-	-	5.5	12.5	1.37	2.35	1.43	-	-	2.70	-
G2B-0808C-1-00	1/2" GAS STICK ASSEMBLY, 1.8 CV	-	-	-	5.5	9.9	1.83	2.35	1.43	-	-	2.70	-
G2B-0808C-1-10	1/2" GAS STICK ASSEMBLY, 1.8 CV, MOUNTING BRACKET	3.79	2.34	0.87	5.5	9.9	1.83	2.35	1.43	-	-	2.70	-
G2B-0808C-1-20	1/2" GAS STICK ASSEMBLY, 1.8 CV, LOTO	-	-	-	5.5	9.9	1.83	2.35	1.43	-	-	2.70	0.3
G2B-0808C-1-30	1/2" GAS STICK ASSEMBLY, 1.8 CV, MOUNTING BRACKET, LOTO	3.79	2.34	0.87	5.5	9.9	1.83	2.35	1.43	-	-	2.70	0.3
G2B-0808C-1-01	1/2" GAS STICK ASSEMBLY, 1.8 CV, FILTER LF	-	-	-	5.5	12.8	1.83	2.35	1.43	-	-	2.70	-
G2B-1212C-1-00	3/4" GAS STICK ASSEMBLY, 1.8 CV	-	-	-	5.5	10.3	1.83	2.35	1.43	-	-	2.70	-
G2B-1212C-1-20	3/4" GAS STICK ASSEMBLY, 1.8 CV, LOTO	-	-	-	5.5	10.3	1.83	2.35	1.43	-	-	2.70	0.3


 6080 LELAND ST.  
 VENTURA, CA. 93003  
 (805) 658-0944  
[www.valex.com](http://www.valex.com)

## CUT SHEET CFOS GAS STICK

SIZE A	DWG. NO. PDC-GAS STICK	REV. J
SCALE: 1:6		SHEET 2 OF 2