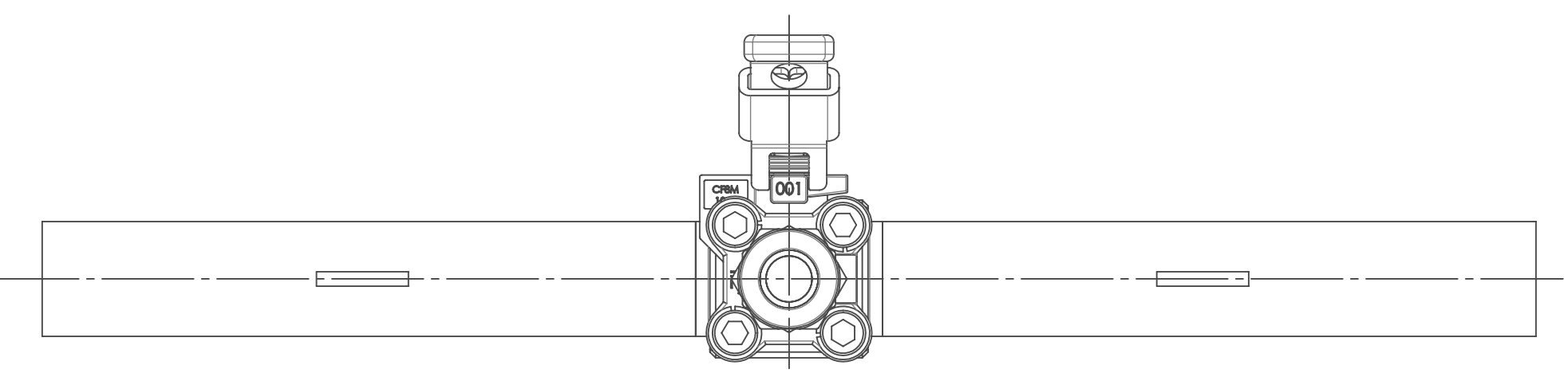
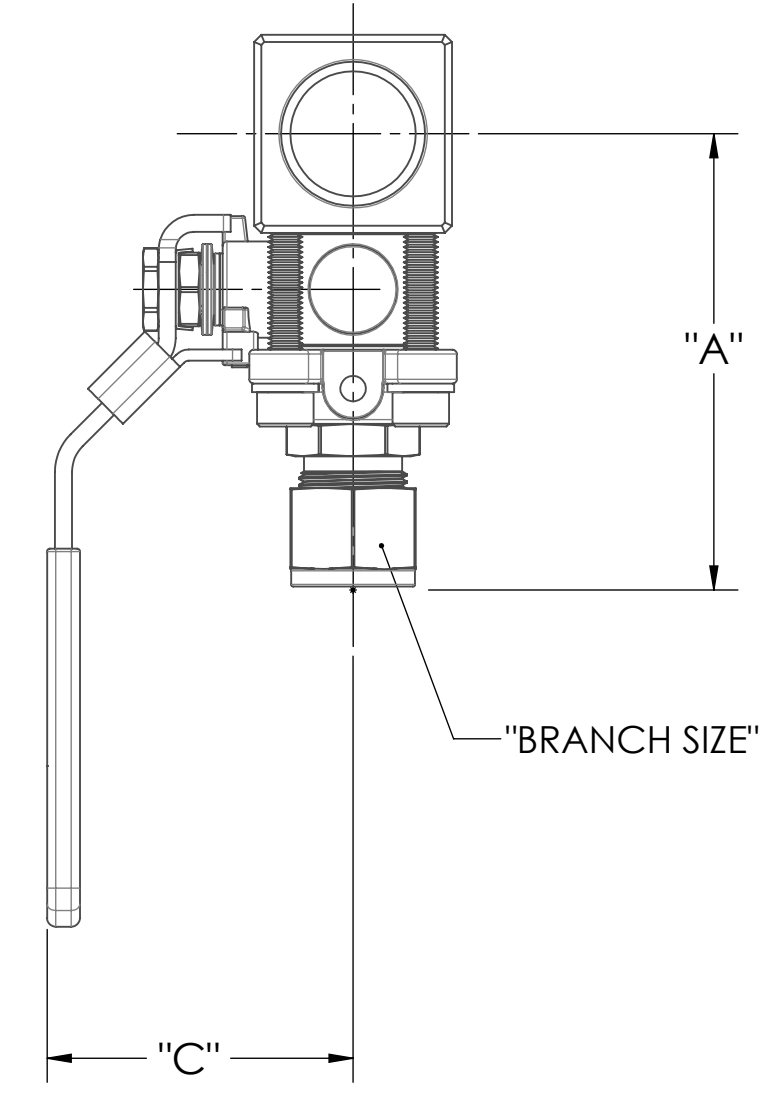
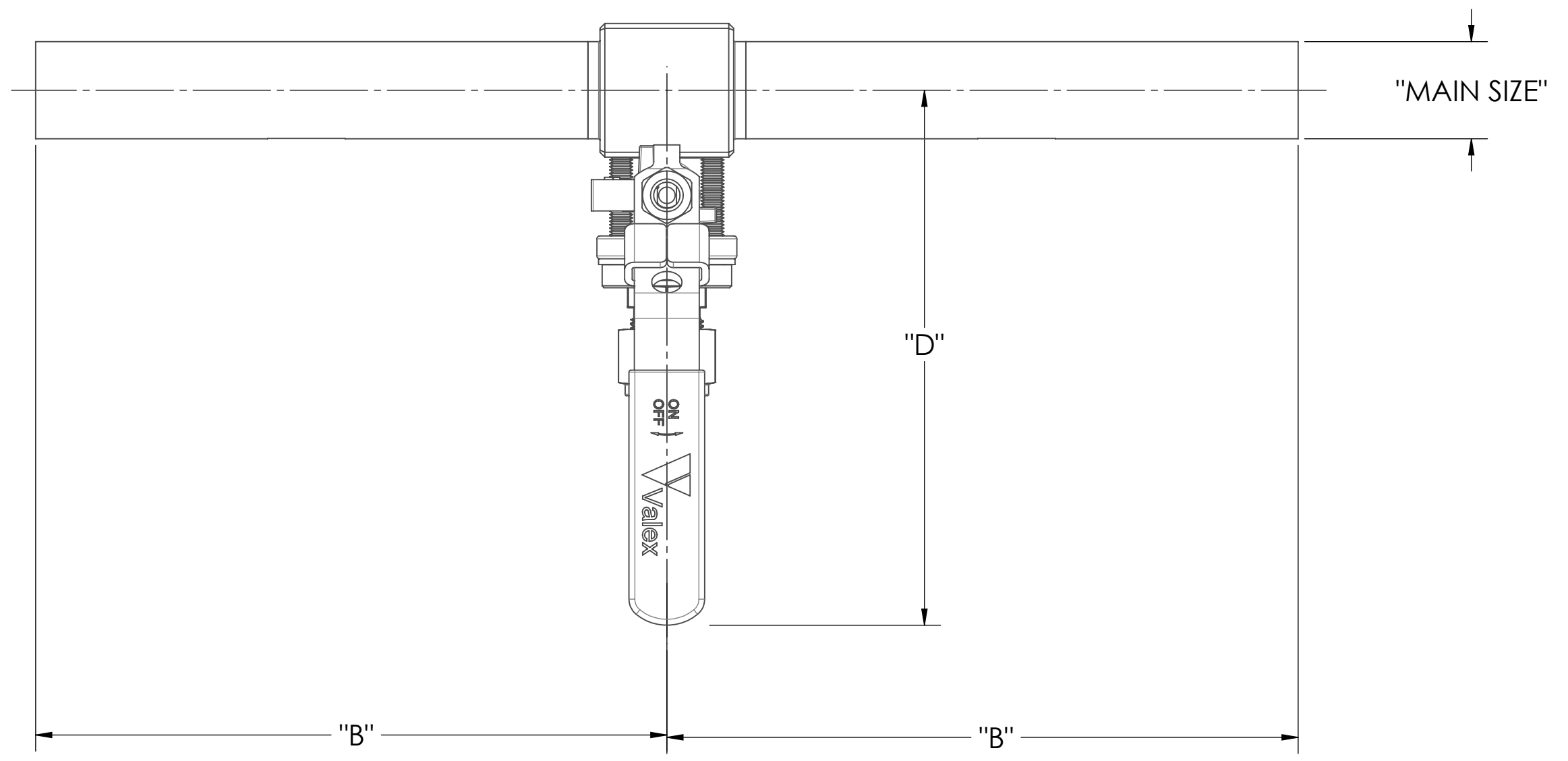



REVISION RECORD			
REV.	DATE	DESCRIPTION	DCN
F	08-31-2009	REVISE DIMENSIONS	1121
G	08-06-2012	ADD 6" MAIN RUN CONFIGURATIONS	1664
H	08-26-2013	CHANGES PER DCN 2037	2037
I	09-29-2022	CHANGES PER DCN 5762	5762

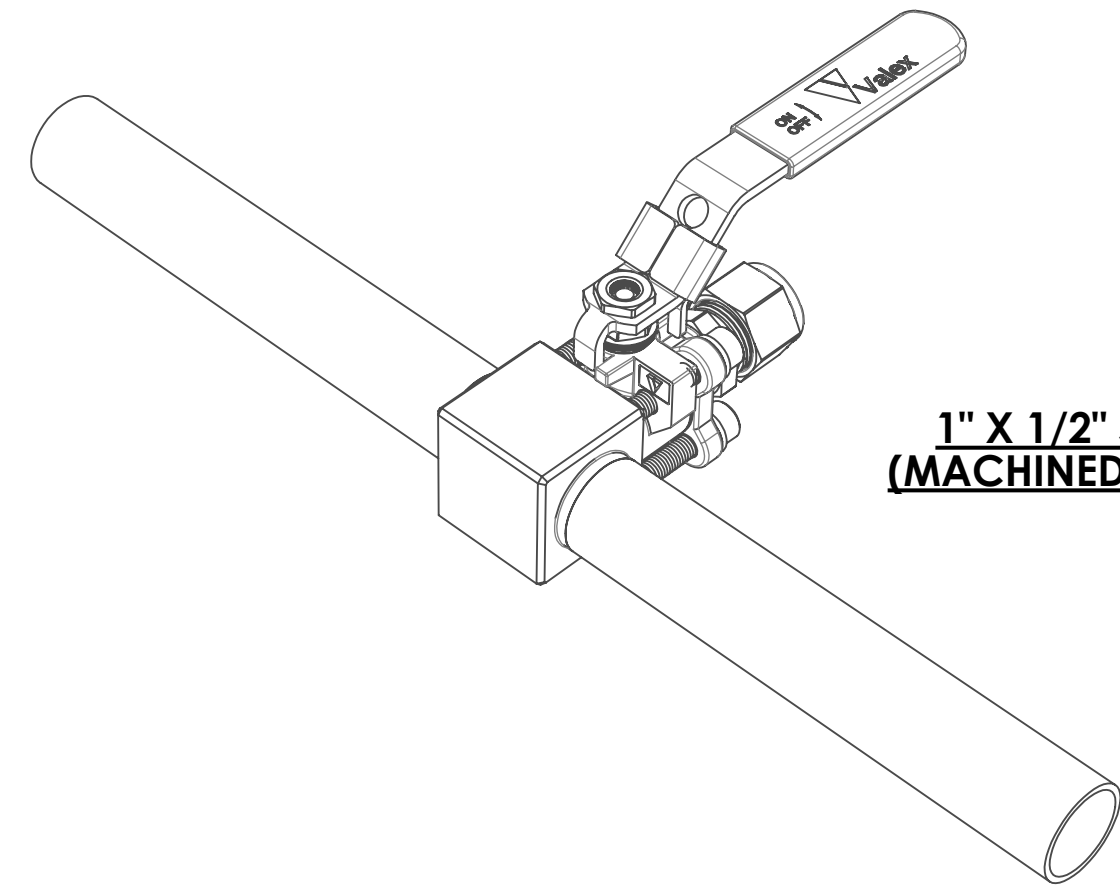


1. DIMENSIONS ARE APPROXIMATE AND MAY VARY FROM VALVE TO VALVE
REFERENCE VALEX SPECIFICATION SP-9217 FOR OVERALL LENGTH TOLERANCES.
2. DIMENSIONS ARE SUBJECT TO CHANGE AS PRODUCT IMPROVEMENTS MAY ALTER VALVE DESIGN.
3. OVERALL LENGTH DIMENSION IS CALCULATED ASSUMING COMPRESSION NUT IS FINGER TIGHT.

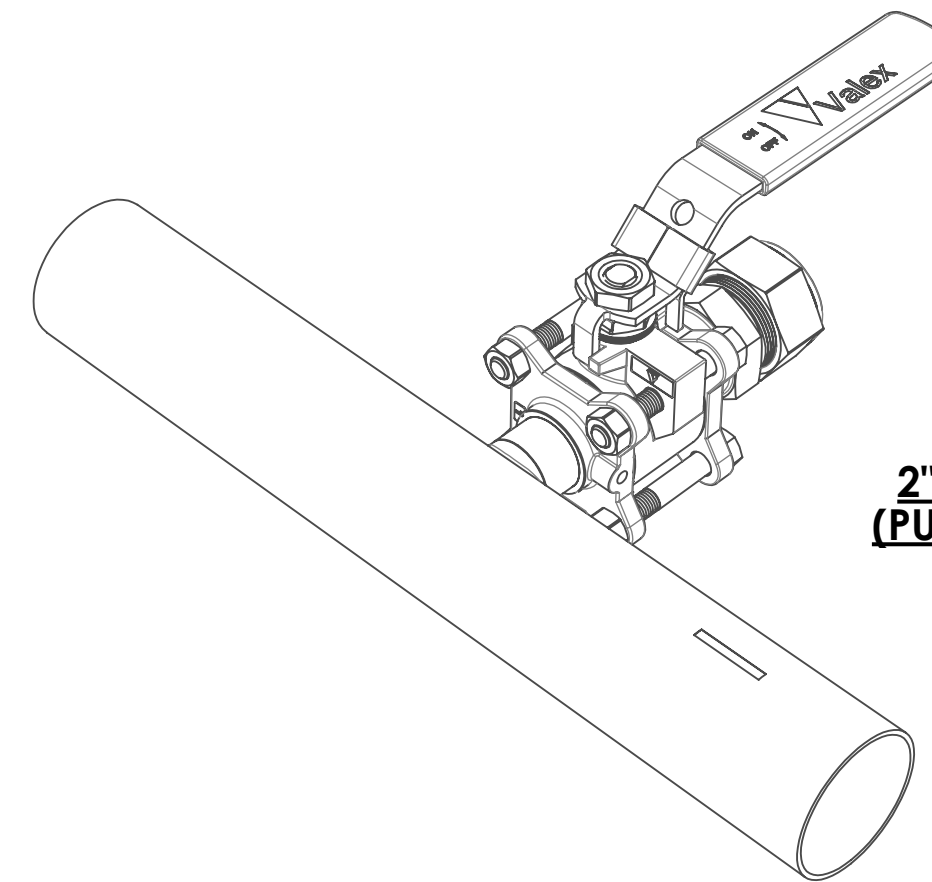
NOTES: UNLESS OTHERWISE SPECIFIED

CAD GENERATED DRAWING, DO NOT MANUALLY UPDATE		 6080 LELAND ST. VENTURA, CA 93003 (805) 658-0944 www.valex.com	
APPROVALS	DATE	BALL VALVE, SHC CROSS, COMPRESSION ENDS	
DRAWN	C. MAO 02-04-2002		
CHECKED	C. MAO 02-20-2002		
ENG.	C. MAO 02-20-2002		
Q.A.	R. MULDONG 02-21-2002		
MFG.	T. KELLENBERGER 02-22-2002	SIZE C DWG. NO. PDC-SHC-CC SCALE: 0.75:1	REV. I SHEET 1 OF 2

SIZE		DIMENSIONS IN INCHES			
MAIN	BRANCH	"A"	"B"	"C"	"D"
1/2"	1/4"	2.89	5.50	2.16	5.48
	3/8"	3.01	5.50	2.16	5.48
	1/2"	3.15	5.50	2.16	5.48
3/4"	1/4"	2.89	6.50	2.16	5.48
	3/8"	3.01	6.50	2.16	5.48
	1/2"	3.15	6.50	2.16	5.48
	3/4"	3.70	6.50	2.32	6.42
1"	1/4"	2.89	6.50	2.16	5.48
	3/8"	3.01	6.50	2.16	5.48
	1/2"	3.15	6.50	2.16	5.48
	3/4"	3.70	6.50	2.32	6.42
	1"	5.33	6.50	2.92	7.96
1-1/2"	1/4"	4.38	6.50	2.16	6.97
	3/8"	4.50	6.50	2.16	6.97
	1/2"	4.63	6.50	2.16	6.97
	3/4"	4.98	6.50	2.32	7.70
	1"	5.61	6.50	2.92	8.24
	1-1/2"	7.39	6.50	3.76	10.81
2"	1/4"	4.66	6.50	2.16	7.25
	3/8"	4.78	6.50	2.16	7.25
	1/2"	4.91	6.50	2.16	7.25
	3/4"	5.24	6.50	2.32	7.99
	1"	5.90	6.50	2.92	8.53
	1-1/2"	7.67	6.50	3.76	11.10
3"	1/4"	5.13	8.50	2.16	7.72
	3/8"	5.25	8.50	2.16	7.72
	1/2"	5.38	8.50	2.16	7.72
	3/4"	5.76	8.50	2.32	8.49
	1"	6.40	8.50	2.92	9.03
	1-1/2"	8.20	8.50	3.76	11.62
4"	1/4"	5.69	8.50	2.16	8.27
	3/8"	5.80	8.50	2.16	8.27
	1/2"	5.94	8.50	2.16	8.27
	3/4"	6.26	8.50	2.32	8.99
	1"	6.90	8.50	2.92	9.53
	1-1/2"	8.77	8.50	3.76	12.19
6"	1/4"	6.48	8.50	2.16	9.04
	3/8"	6.55	8.50	2.16	9.04
	1/2"	6.70	8.50	2.16	9.04
	3/4"	7.34	8.50	2.32	10.06
	1"	7.97	8.50	2.92	10.60
	1-1/2"	9.80	8.50	3.76	13.22



**1" X 1/2" SHC SHOWN
(MACHINED BLOCK ASSY).**



**2" X 1" SHC SHOWN
(PULLED CROSS ASSY).**