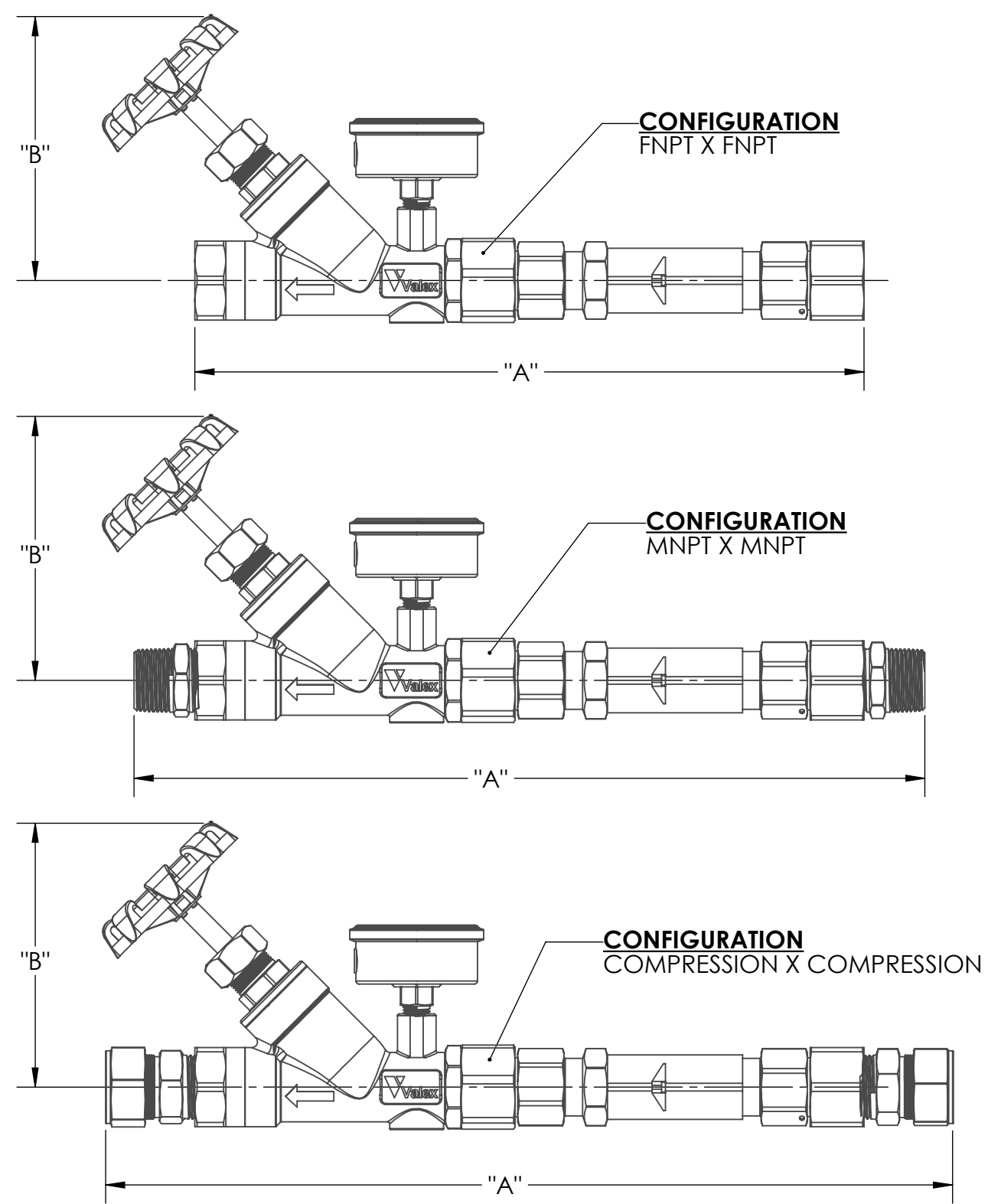



REVISION RECORD			
DATE	REV.	DESCRIPTION	DCN
11-04-2020	E	CHANGES PER DCN 4925	4925
05-31-2022	F	CHANGES PER DCN 5632	5632

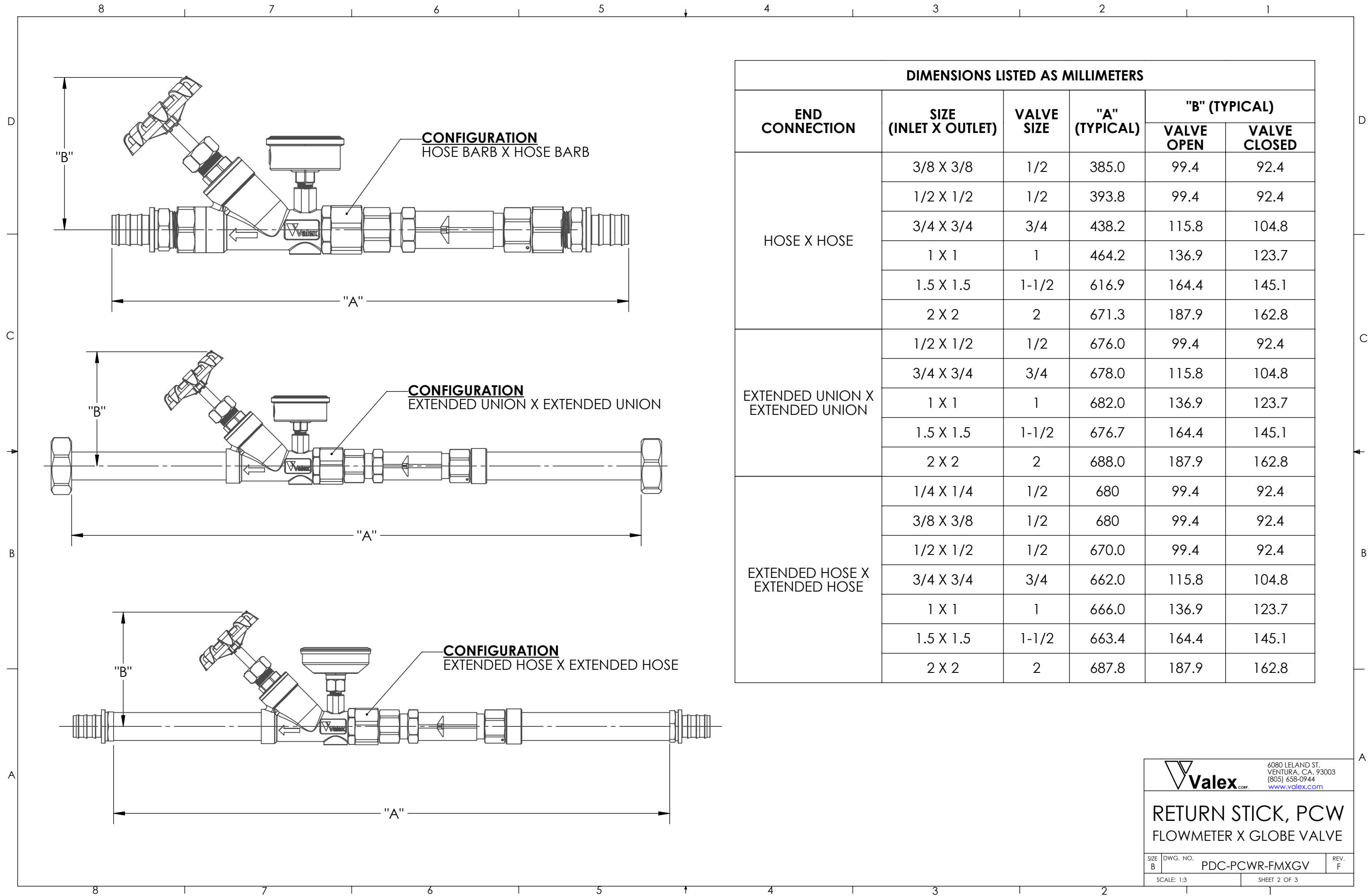


DIMENSIONS LISTED AS MILLIMETERS					
END CONNECTION	SIZE (INLET X OUTLET)	VALVE SIZE	"A" (TYPICAL)	"B" (TYPICAL)	
				VALVE OPEN	VALVE CLOSED
FNPT X FNPT	1/2 X 1/2	1/2	308.0	99.4	92.4
	3/4 X 3/4	3/4	324.0	115.8	104.8
	1 X 1	1	347.0	136.9	123.7
	1.5 X 1.5	1-1/2	440.6	164.4	145.1
	2 X 2	2	470.6	187.9	162.8
MNPT X MNPT	1/2 X 1/2	1/2	366.6	99.4	92.4
	3/4 X 3/4	3/4	382.4	115.8	104.8
	1 X 1	1	410.0	136.9	123.7
	1.5 X 1.5	1-1/2	508.7	164.4	145.1
	2 X 2	2	541.5	187.9	162.8
COMPRESSION X COMPRESSION	1/2 X 1/2	1/2	382.0	99.4	92.4
	3/4 X 3/4	3/4	397.2	115.8	104.8
	1 X 1	1	439.6	136.9	123.7
	1.5 X 1.5	1-1/2	583.7	164.4	145.1
	2 X 2	2	660.0	187.9	162.8

1. DIMENSIONS ARE APPROXIMATE AND MAY VARY ON EACH PCW ASSEMBLY.
2. REFERENCE VALEX SPECIFICATION SP-9238 FOR ADDITIONAL DETAILS.
3. DIMENSIONS ARE SUBJECT TO CHANGE AS PRODUCT IMPROVEMENTS MAY ALTER ASSEMBLY DESIGN.

NOTES: UNLESS OTHERWISE SPECIFIED

CAD GENERATED DRAWING. DO NOT MANUALLY UPDATE		 6080 LELAND ST. VENTURA, CA. 93003 (805) 658-0944 www.valex.com
APPROVALS	DATE	
DRAWN C. MAO	10-04-2018	RETURN STICK, PCW FLOWMETER X GLOBE VALVE
CHECKED T. NEVINS	04-17-2019	
ENG. C. MAO	04-17-2019	
Q.A. J. KIM	04-18-2019	
MFG. T. KELLENBERGER	04-18-2019	
SCALE: 1:3		SIZE DWG. NO. PDC-PCWR-FMXGV REV. F SHEET 1 OF 3

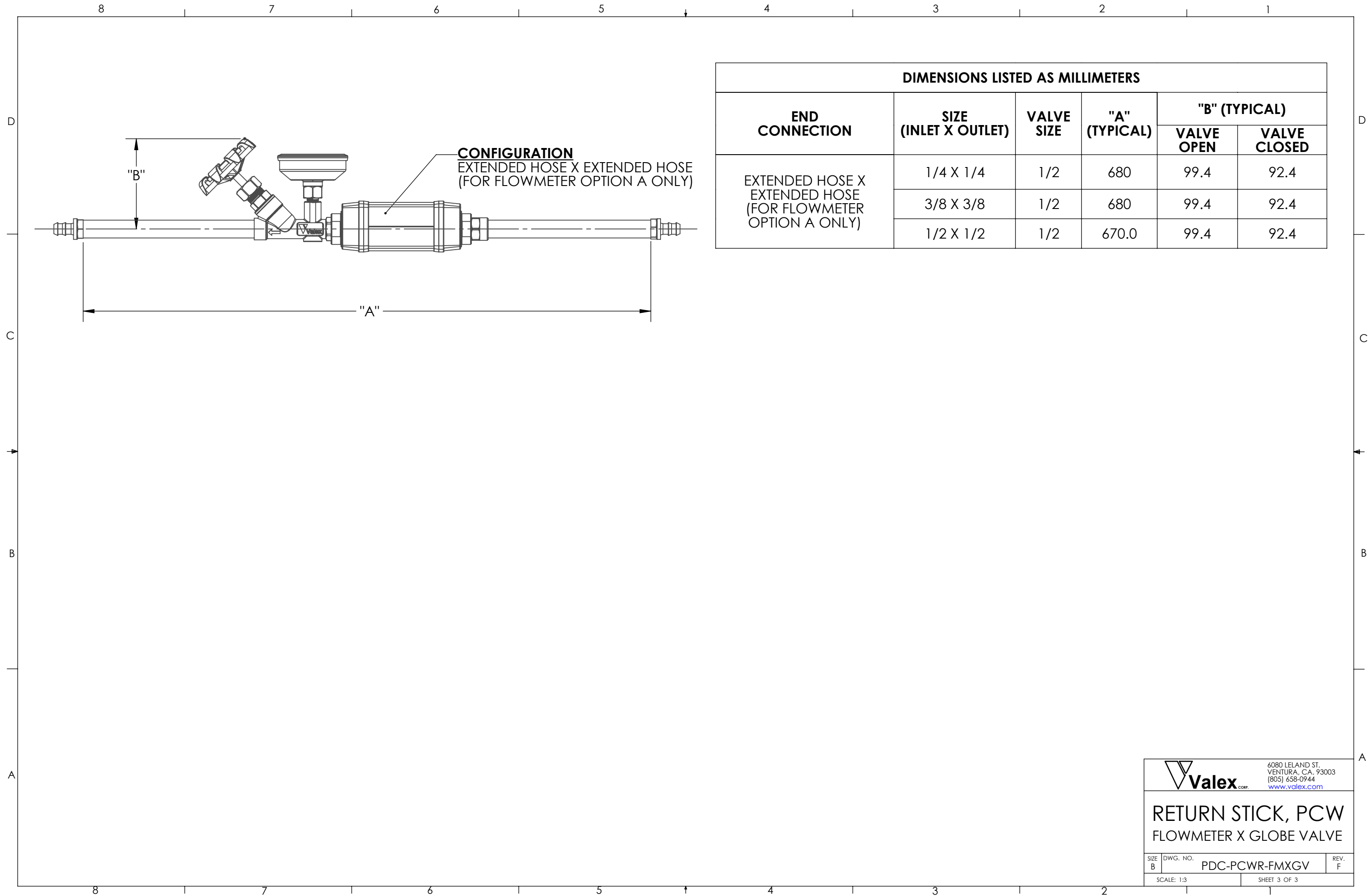


DIMENSIONS LISTED AS MILLIMETERS					
END CONNECTION	SIZE (INLET X OUTLET)	VALVE SIZE	"A" (TYPICAL)	"B" (TYPICAL)	
				VALVE OPEN	VALVE CLOSED
HOSE X HOSE	3/8 X 3/8	1/2	385.0	99.4	92.4
	1/2 X 1/2	1/2	393.8	99.4	92.4
	3/4 X 3/4	3/4	438.2	115.8	104.8
	1 X 1	1	464.2	136.9	123.7
	1.5 X 1.5	1-1/2	616.9	164.4	145.1
	2 X 2	2	671.3	187.9	162.8
EXTENDED UNION X EXTENDED UNION	1/2 X 1/2	1/2	676.0	99.4	92.4
	3/4 X 3/4	3/4	678.0	115.8	104.8
	1 X 1	1	682.0	136.9	123.7
	1.5 X 1.5	1-1/2	676.7	164.4	145.1
	2 X 2	2	688.0	187.9	162.8
EXTENDED HOSE X EXTENDED HOSE	1/4 X 1/4	1/2	680	99.4	92.4
	3/8 X 3/8	1/2	680	99.4	92.4
	1/2 X 1/2	1/2	670.0	99.4	92.4
	3/4 X 3/4	3/4	662.0	115.8	104.8
	1 X 1	1	666.0	136.9	123.7
	1.5 X 1.5	1-1/2	663.4	164.4	145.1
	2 X 2	2	687.8	187.9	162.8

Valex corp.
6080 LELAND ST.
VENTURA, CA. 93003
(805) 658-0944
www.valex.com

**RETURN STICK, PCW
FLOWMETER X GLOBE VALVE**

SIZE B	DWG. NO. PDC-PCWR-FMXGV	REV. F
-----------	----------------------------	-----------



DIMENSIONS LISTED AS MILLIMETERS					
END CONNECTION	SIZE (INLET X OUTLET)	VALVE SIZE	"A" (TYPICAL)	"B" (TYPICAL)	
				VALVE OPEN	VALVE CLOSED
EXTENDED HOSE X EXTENDED HOSE (FOR FLOWMETER OPTION A ONLY)	1/4 X 1/4	1/2	680	99.4	92.4
	3/8 X 3/8	1/2	680	99.4	92.4
	1/2 X 1/2	1/2	670.0	99.4	92.4


 6080 LELAND ST.
 VENTURA, CA. 93003
 (805) 658-0944
www.valex.com

RETURN STICK, PCW
FLOWMETER X GLOBE VALVE

SIZE B	DWG. NO. PDC-PCWR-FMXGV	REV. F
-----------	----------------------------	-----------

SCALE: 1:3 SHEET 3 OF 3