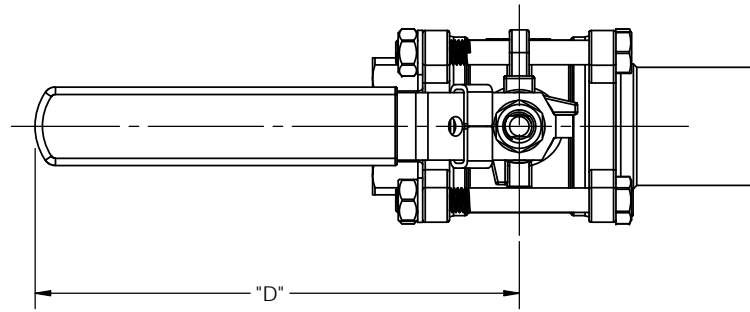
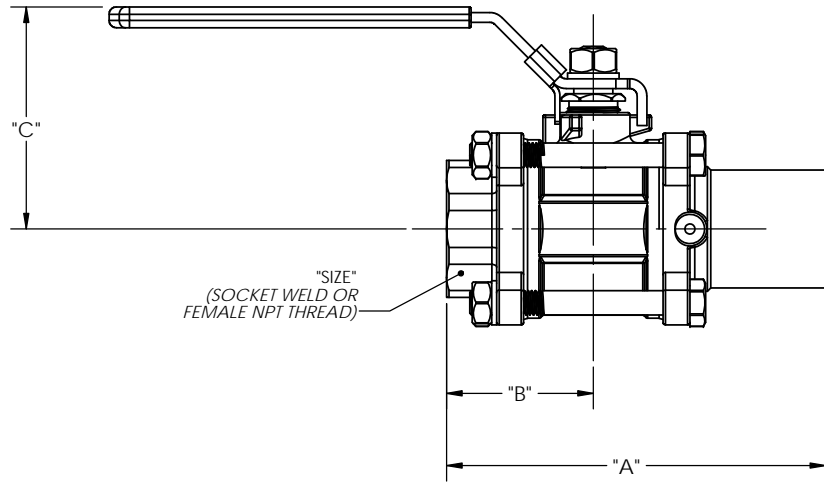


REVISION RECORD			
REV.	DATE	DESCRIPTION	DCN
A	05-20-2013	INITIAL RELEASE	1922




DIMENSIONS IN MILLIMETERS *				
SIZE	"A"	"B"	"C"	"D"
NPS 1/2"	105.2	37.5	59	105
NPS 3/4"	107.5	40.0	65	133
NPS 1"	121.0	45.0	74	159
NPS 1-1/2"	155.0	60.0	91	198
NPS 2"	172.0	70.0	99	198

\* DIMENSIONS APPLY TO EITHER SOCKET-WELD OR FEMALE NPT CONNECTIONS ON LEFT SIDE OF VALVE (AS SHOWN).



1. DIMENSIONS ARE APPROXIMATE AND MAY VARY FROM VALVE TO VALVE. REFERENCE VALEX SPECIFICATION SP-9236 FOR OVERALL LENGTH TOLERANCES.
2. DIMENSIONS ARE SUBJECT TO CHANGE AS PRODUCT IMPROVEMENTS MAY ALTER VALVE DESIGN.

NOTES: UNLESS OTHERWISE SPECIFIED

CAD GENERATED DRAWING. DO NOT MANUALLY UPDATE		 6080 LELAND ST. VENTURA, CA, 93003 (805) 658-0944 www.valex.com		
APPROVALS	DATE			
DRAWN C. MAG	05-09-2013	<b>BALL VALVE, PCW</b> STRAIGHT, PIPE X SOCKET / FNPT		
CHECKED T. NEVINS	05-11-2013			
ENG. C. MAG	05-10-2013			
C.A. R. MULDONG	05-20-2013	SIZE B	DWG. NO. PDC-PCW-STR-PS	REV. A
MFG. T. KELLENBERGER	05-10-2013	SCALE: 1:2	SHEET 1 OF 1	