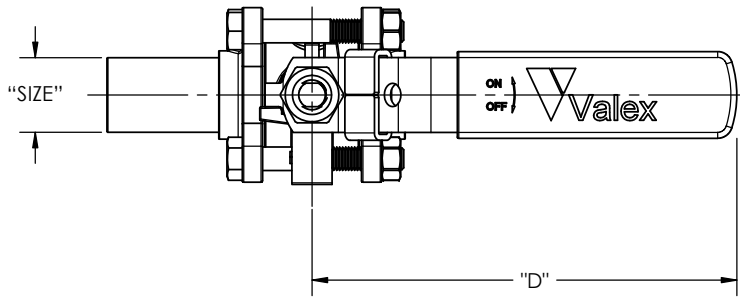
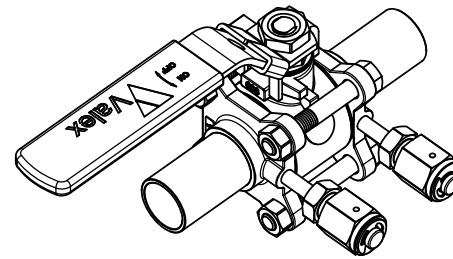
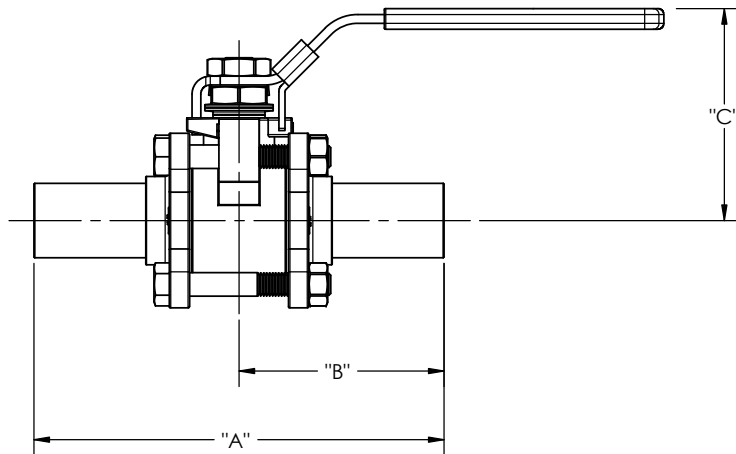


REVISION RECORD			
REV.	DATE	DESCRIPTION	DCN
O	01-10-2012	CHANGES PER DCN 1539	1539
P	11-20-2012	CHANGES PER DCN 1757	1757
Q	01-12-2015	CHANGES PER DCN 2527	2527
R	04-09-2019	CHANGES PER DCN 4265	4265




DIMENSIONS IN INCHES (ASTM TUBE SIZES)				
SIZE	"A"	"B"	"C"	"D"
1/4"	4.50	2.25	2.16	4.40
3/8"	4.50	2.25	2.16	4.40
1/2"	5.00	2.50	2.16	4.40
3/4"	5.25	2.63	2.32	5.11
1"	5.50	2.75	2.92	5.65
1-1/2"	7.00	3.50	3.76	7.72
2"	8.00	4.00	4.12	7.72
2-1/2"	9.50	4.75	5.68	12.08
3"	10.80	5.40	6.03	12.08
4"	12.35	6.18	7.04	15.52
6"	17.00	8.50	10.6	18.0-36.0



SHOWN WITH OPTIONAL FACE-SEAL PURGE PORTS
(COMPRESSION PURGE ALSO AVAILABLE)

1. DIMENSIONS ARE APPROXIMATE AND MAY VARY FROM VALVE TO VALVE. REFERENCE VALEX SPECIFICATION SP-9217 FOR OVERALL LENGTH TOLERANCES.
2. IF PURGE PORT OPTION IS SELECTED, 1/4" PURGE WILL BE USED ON VALVES UP TO 2" TUBE / JIS 50A / NPS 2. 1/2" PURGE IS USED ON VALVES LARGER THAN 2" TUBE / JIS 50A / NPS 2.
3. DIMENSIONS ARE SUBJECT TO CHANGE AS PRODUCT IMPROVEMENTS MAY ALTER VALVE DESIGN.

NOTES: UNLESS OTHERWISE SPECIFIED

CAD GENERATED DRAWING. DO NOT MANUALLY UPDATE		 6080 LELAND ST. VENTURA, CA, 93003 (805) 638-0944 www.valex.com	
APPROVALS	DATE	BALL VALVE, STR STRAIGHT, TUBE/PIPE ENDS	REV. R
DRAWN C. MAO	04-21-2001		
CHECKED A. MAGANA	08-03-2001	SIZE B DWG. NO. PDC-STR-MM SCALE: 0.6:1 SHEET 1 OF 2	
ENG. R. KOTTLER	08-03-2001		
Q.A. R. MULDONG	08-03-2001		
MFG. T. KELLENBERGER	08-03-2001		

THE INFORMATION CONTAINED IN THIS DRAWING IS THE SOLE PROPERTY OF VALEX CORPORATION. ANY REPRODUCTION IN PART OR WHOLE WITHOUT THE WRITTEN PERMISSION OF VALEX CORPORATION IS PROHIBITED.

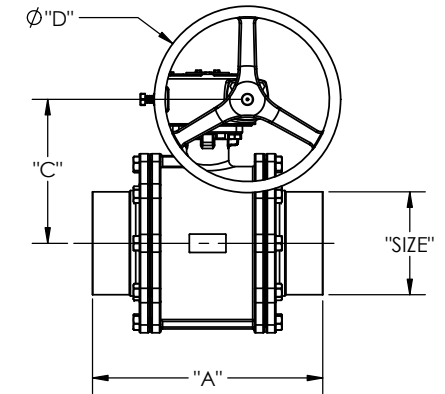
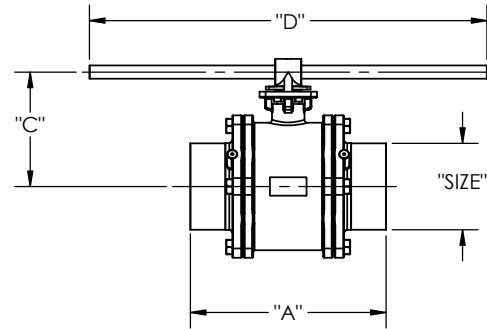
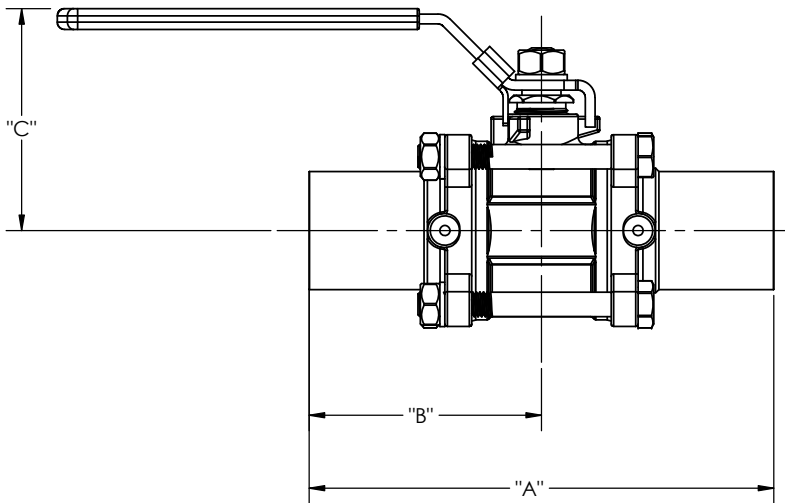
DIMENSIONS IN MILLIMETERS (NPS & JIS PIPE SIZES)

SIZE	"A"	"B"	"C"	"D"
NPS 1/2 / JIS 15A	135.4	67.7	59	105
NPS 3/4 / JIS 20A	135.0	67.5	65	133
NPS 1 / JIS 25A	152.0	76.0	74	159
NPS 1-1/4 / JIS 32A	177.2	88.6	78	159
NPS 1-1/2 / JIS 40A	190.0	95.0	91	198
NPS 2 / JIS 50A	204.0	102.0	99	198
NPS 2-1/2 / JIS 65A	253.8	126.9	138	260
NPS 3 / JIS 80A	280.0	140.0	149	260
NPS 4 / JIS 100A	306.0	153.0	186	288
NPS 5 / JIS 125A	320.0	160.0	198	650
NPS 6 / JIS 150A	376.4	188.2	235	305

SIZES NPS 1/2 THRU NPS 4

SIZE NPS 5

SIZE NPS 6



NOTES: UNLESS OTHERWISE SPECIFIED

Valex
 6080 LELAND ST.
 VENTURA, CA, 93003
 (805) 638-0244
 www.valex.com

BALL VALVE, STR
 STRAIGHT, TUBE/PIPE ENDS

SIZE B	DWG. NO. PDC-STR-MM	REV. R
SCALE: 0.6:1	SHEET 2 OF 2	