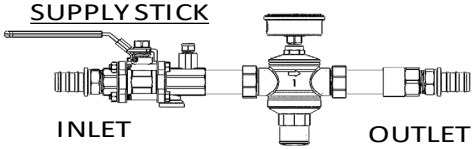
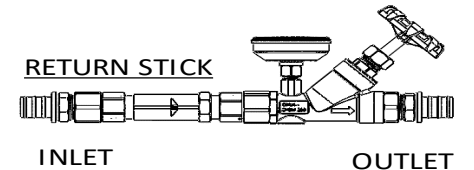


PCW STICK PART NUMBER MATRIX <sup>1</sup>	
W	S - 08 M 08 M - 2 D 5 G - B
<b>W = Water Stick</b>	
<b>Type</b> S = Supply Stick R = Return Stick	
<b>Inlet Size</b> 04 = 1/4" 06 = 3/8" <b>08 = 1/2"</b> 12 = 3/4" 16 = 1" 24 = 1-1/2" 32 = 2"	
<b>Inlet Connection</b> C = Compression E = Extended Hose Barb F = Female NPT G = Flange H = Hose Barb <b>M = Male NPT</b> U = Extended Union V <sup>2</sup> = Extended Union (Compact) Y = Union Z <sup>2</sup> = Union (Compact)	
<b>Outlet Size</b> 04 = 1/4" 06 = 3/8" <b>08 = 1/2"</b> 12 = 3/4" 16 = 1" 24 = 1-1/2" 32 = 2"	
<b>Outlet Connection</b> C = Compression E = Extended Hose Barb F = Female NPT G = Flange H = Hose Barb <b>M = Male NPT</b> U = Extended Union V <sup>2</sup> = Extended Union (Compact) Y = Union Z <sup>2</sup> = Union (Compact)	
	<b>Flow Meter Range</b> A = 1 GPM <b>B = 5 GPM</b> C = 16 GPM D = 28 GPM E = 100 GPM X = Not Required
	<b>Outlet Item Options</b> P = Petes Plug <sup>®</sup> <b>G = Pressure Gauge</b> D = Dual Pressure / Temperature Gauge X = Not Required
	<b>Outlet Item</b> X = Not Required <b>Supply Stick Only</b> <b>5 = Regulator</b> 6 = Regulator (180°Orientation) <b>Return Stick Only</b> 4 = Globe Valve
	<b>Inlet Item Options</b> P = Petes Plug <sup>®</sup> G = Pressure Gauge <b>D = Dual Pressure / Temperature Gauge</b> X = Not Required
	<b>Inlet Item</b> X = Not Required <b>Supply Stick Only</b> 1 = Ball Valve (Oval Handle) <b>2 = Ball Valve (Lever)</b> <b>Return Stick Only</b> 3 = Flowmeter
	<p><b>SUPPLY STICK</b></p>  <p><b>RETURN STICK</b></p> 
Notes:	
<sup>1</sup> Not all possible part number configurations are available. Please contact Valex for availability.	
<sup>2</sup> Used only for 1.5" and 2" union sizes that also have stainless steel mating end connection.	

## PCW UNION FITTING PART NUMBER MATRIX <sup>1</sup>

**WU - U - 16 P - 16 M**

**Product Line**

WU = PCW Unions

**Union Type**

U = Standard

V<sup>2</sup> = Compact

**"Flat" Size**

XX = None

04 = 1/4

06 = 3/8

08 = 1/2

12 = 3/4

**16 = 1**

24 = 1-1/2

32 = 2

**"Flat" Side Assembly**

X = None (No Flat Side)

**P = PVC**

C = CPVC

H = Hose Barb

S = NPS Pipe

T = Tube

**"Thread" Side Assembly**

X<sup>3</sup> = None (No Thread Side, No Hex Nut)

**M = Male NPT**

S = NPS Pipe

T = Tube

**"Thread" Size**

XX = None

04 = 1/4

06 = 3/8

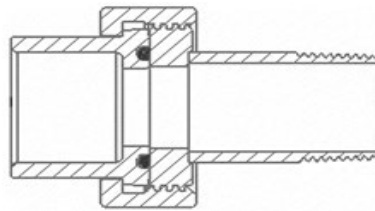
08 = 1/2

12 = 3/4

**16 = 1**

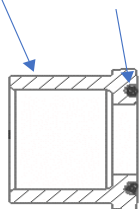
24 = 1-1/2

32 = 2



PVC, CPVC,  
Hose Barb,  
Pipe or Tube

O-RING

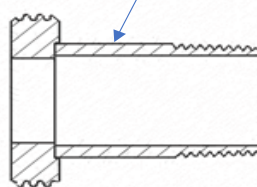


"FLAT" SIDE

HEX NUT



Male NPT,  
Pipe or Tube



"THREAD" SIDE

<sup>1</sup> Not all possible part number configurations are available. Please contact Valex for availability.

<sup>2</sup> Compact Union Type: used only for stainless steel "Flat" assembly end connection options.

<sup>3</sup> No thread side, no hex nut option: used on PCW sticks which already contain compatible mating ends.